



**FINDERNE DEVELOPMENT TRUST**  
**STRATEGIC PLAN**  
**2023-2028**

**Introduction**

Finderne is an area of stunning natural beauty to the south of Forres, Moray, contained within the administrative boundary of the Finderne Community Council. With a population of approximately 1,100 people, it is home to a number of communities each with its own dynamic but sharing a strong local identity and a sense of place. Formation of the Finderne Development Trust (FDT) in 2018 originated from a community with a desire to make Finderne an even better place in which to live and this theme is the intention of the directors and staff of the FDT. To develop and achieve this, it is recognised that more is needed to be done to ensure that our communities are provided for in ways that ensure they stay vibrant and sustainable, through the delivery of long lasting social, rural economic and environmental benefits, not just for the current, but for future generations.

The developers of the Logie Wind Farm - Hill of Glaschyle Renewables LLP - supported the vision and rationale for establishing the FDT and have undertaken to provide core funding from its community benefit fund to facilitate the operation of the FDT. Provision of the funding was agreed subject to the FDT undertaking a thorough consultation with its members and the wider Finnerne community to share the Trust's vision and to identify the community's issues, challenges, aspirations, and views as to their priorities for bringing long term improvement to the area. These core requirements are still valid today.

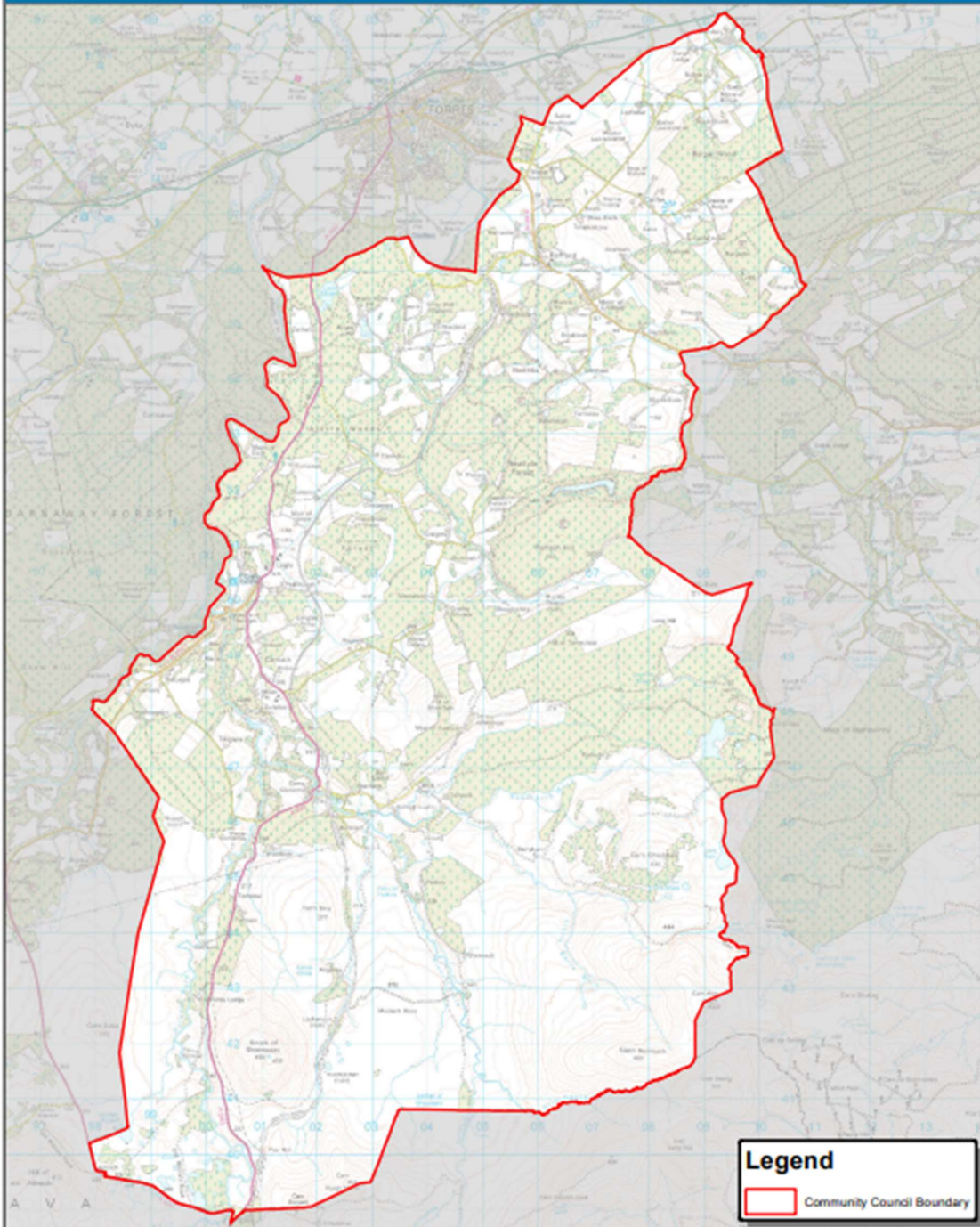
The FDT is required by the developers of the Logie Windfarm, to produce a strategic plan every five years up to a maximum of 25 years. The purpose of this plan is to ensure that the FDT in partnership with the Finnerne community, continues to provide a relevant, supportive, vibrant, and welcoming environment for people from diverse backgrounds, to settle, establish and maintain their livelihoods and to enjoy a good quality of life.

This plan will be used to guide the FDT and prioritise the needs of the community over the next 5 years and provide the community with a sense of ownership and a continuing involvement in the FDT's journey. The plan sets out the FDT's and the local community's vision and aspirations for delivering a range of projects and activities, under a set of key strategic themes, and how the FDT intends to start achieving them.

*'The FDT's mission is to ensure that Finnerne continues to be a welcoming community where people from different backgrounds will want to live, work and visit because of its outstanding environment and the good quality of life it offers.'*



# Community Council 5 Finderne



Reproduced from the Ordnance Survey map with the permission of the Controller of Her Majesty's Stationary Office Crown Copyright 2013  
The Moray Council 100023422 Community Council Boundary 2013 - 2017

## **FDT Strategic Aims**

1. To support the development of Finderne as a sustainable community.
2. To initiate and support projects that will leave a tangible legacy for the community.
3. To support and motivate the Finderne community to engage with the FDT.



## **Operating Principles**

1. To ensure that decisions made by the board are a result of accurate demographic information, showing evidence of need and the potential impact of any project.
2. To devise a robust communication strategy that will increase the quality and frequency of community engagement.
3. To recognise that, whilst some projects funded by the FDT maybe specific to one part of Finderne, the aim will be to ensure development across the community as a whole.



4. To form sub-working groups, possibly to include non-board members, to identify and investigate new projects.

5. To balance the need to support existing organisations with the need to develop new projects.

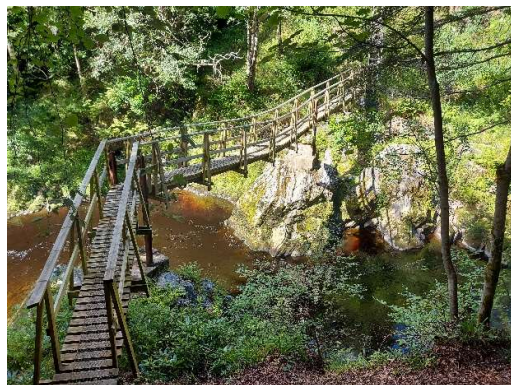
6. To identify partners and networks to ensure that the FDT's aspirations are deliverable.



### **Objectives**



1. To drive forward the installation of high-speed broadband throughout the Funderne area.
2. To promote and initiate affordable housing to support the community.
3. To identify and develop those services that are lacking in the community, for example community transport.
4. To support the wellbeing of the local community including the needs of young people.
5. To reduce social isolation.
6. To react to any changes in community needs.



## **Priority Projects**

1. The provision of broadband throughout the community is considered urgent and pivotal to addressing several of the FDT key themes, including reducing social isolation; meeting the needs of young people; supporting the well-being of the community and in supporting the local economy.

2. The Brockloch affordable housing development in Rafford has begun and 12 houses are planned for rental and purchase. Further suitable land will be investigated to provide increased opportunities, including self-build plots, for more affordable housing solutions.

3. Community Transport. Investigate existing and new opportunities to establish local community transport.

4. Community Wellbeing. A broad topic that will include investigating and responding to the needs of local facilities and organisations. It will also consider solutions to social isolation.

5. Economic Development. The focus will be on promoting and supporting local business initiatives and apprenticeships.

